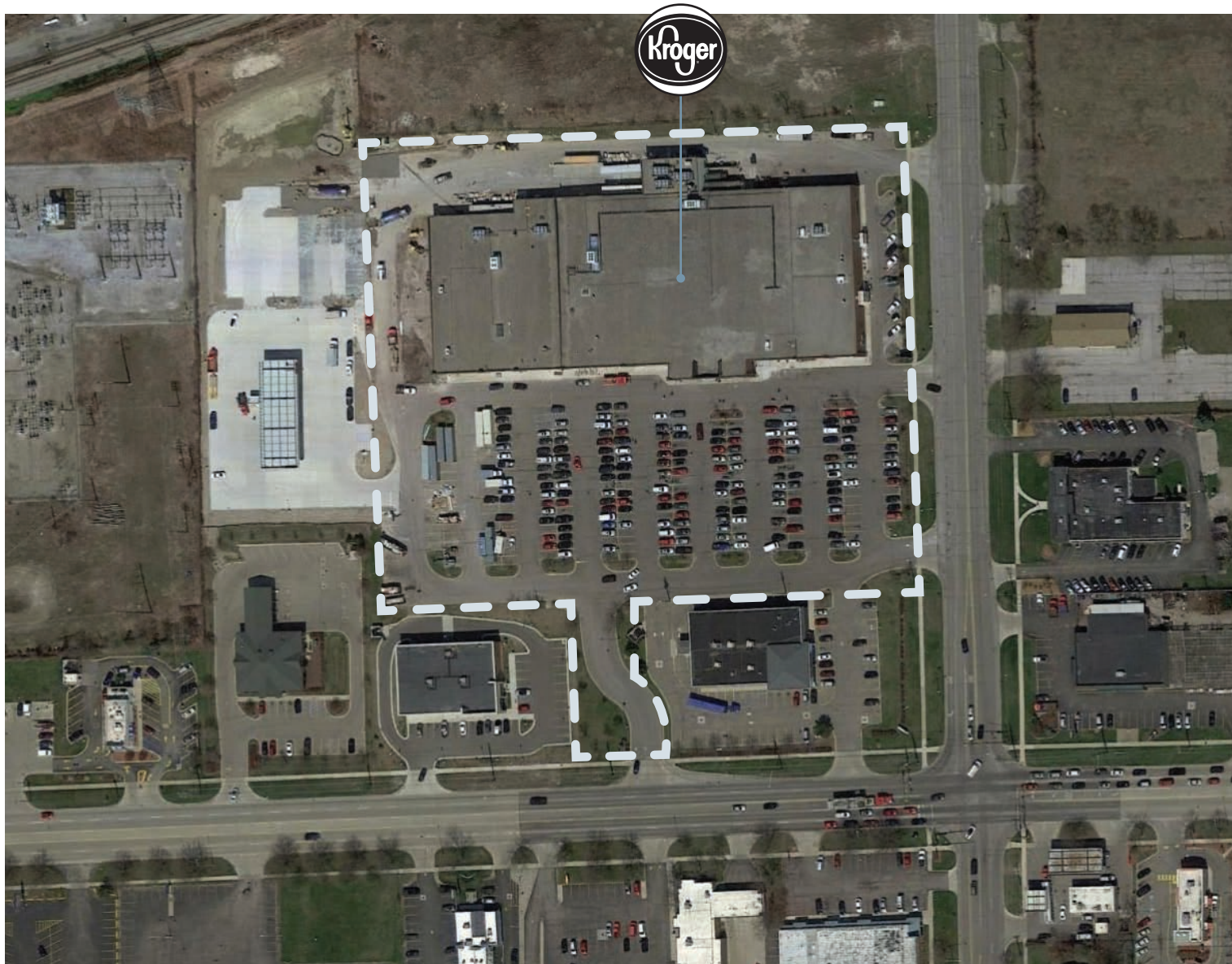


TAYLOR KROGER CENTER

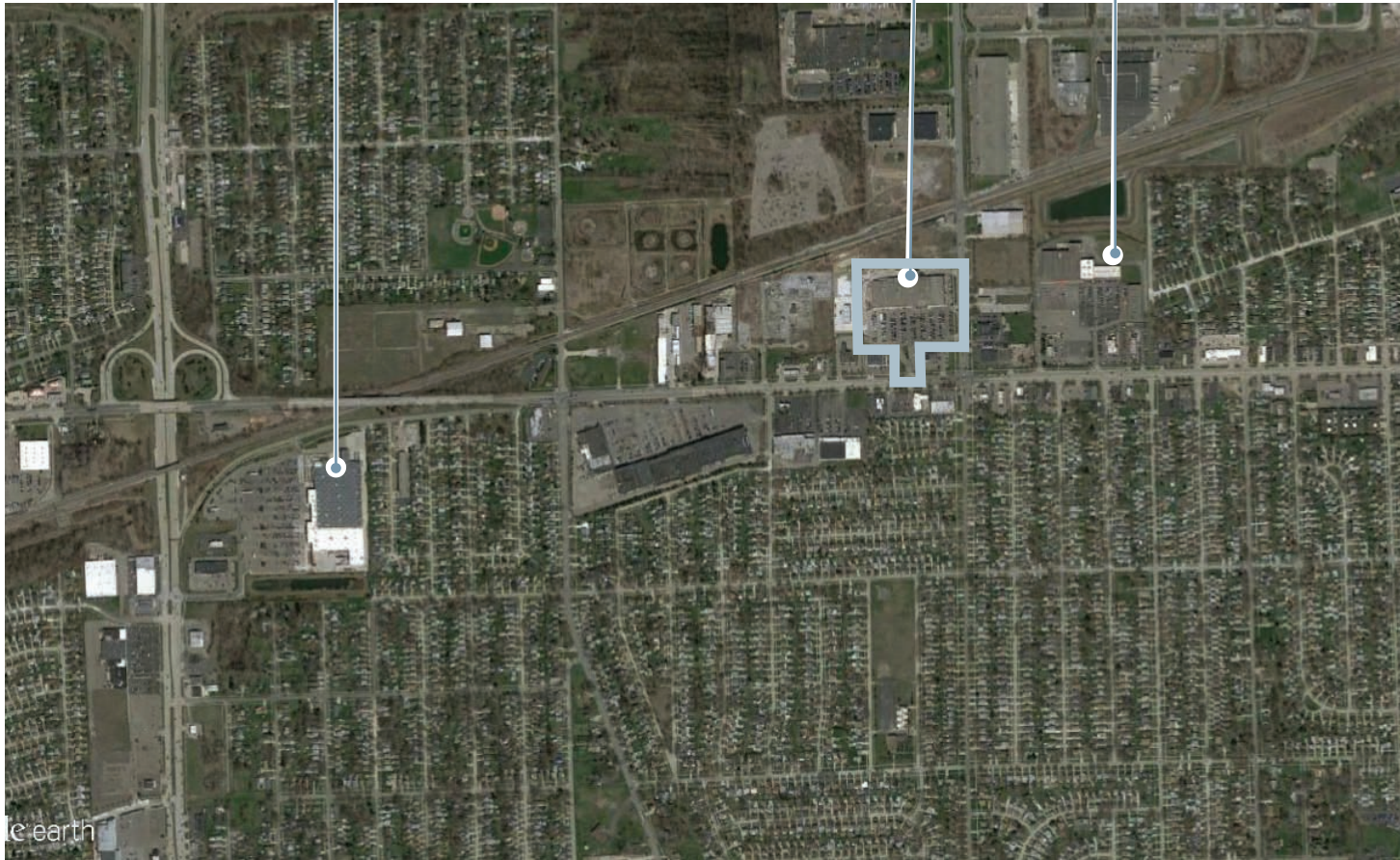
TOTAL GLA: 97,530



Tenant List:	GLA
A Kroger	97,530

7000 Monroe Blvd, Taylor, MI 48180

TAYLOR KROGER CENTER



Demographics	1 mile	3 mile	5 mile
Population	11,232	110,385	248,807
Households	4,488	45,752	103,057
HH Income	\$59,507	\$62,658	\$60,564
Traffic Counts	Total:		26,000
Ecorse Road			26,000
Monroe Boulevard			NA

Devonshire REIT, Inc.
 10100 Waterville St
 Whitehouse, OH 43571
 419.877.1010

Leasing Team:
leasing@devreit.com
 419.877.1015

Eric Hutchins
eric.hutchins@devreit.com
 567.246.5335

